



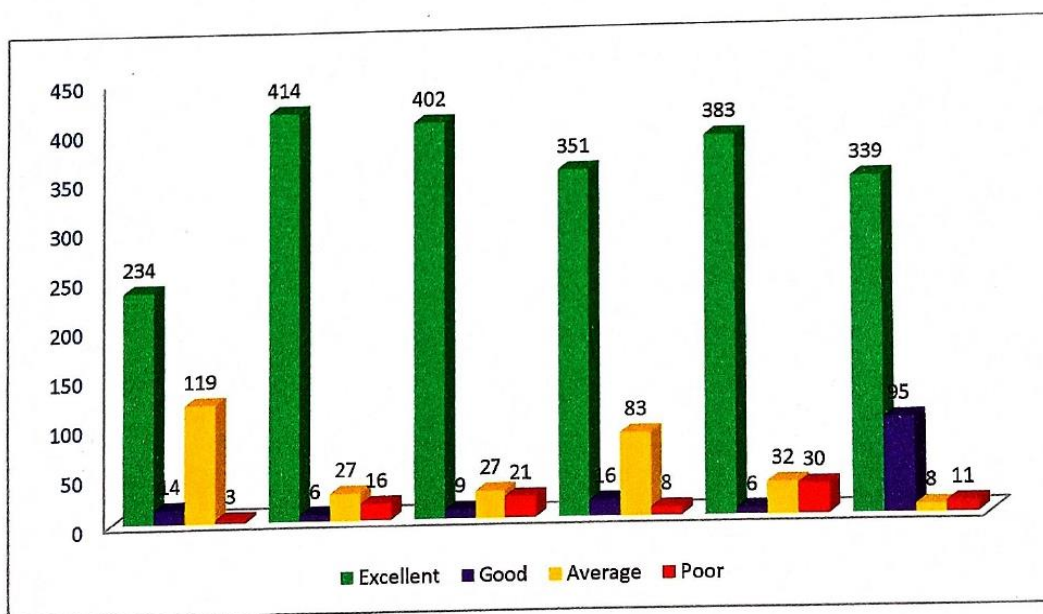
## IDHAYA COLLEGE FOR WOMEN, KUMBAKONAM

### Student Feedback Analysis

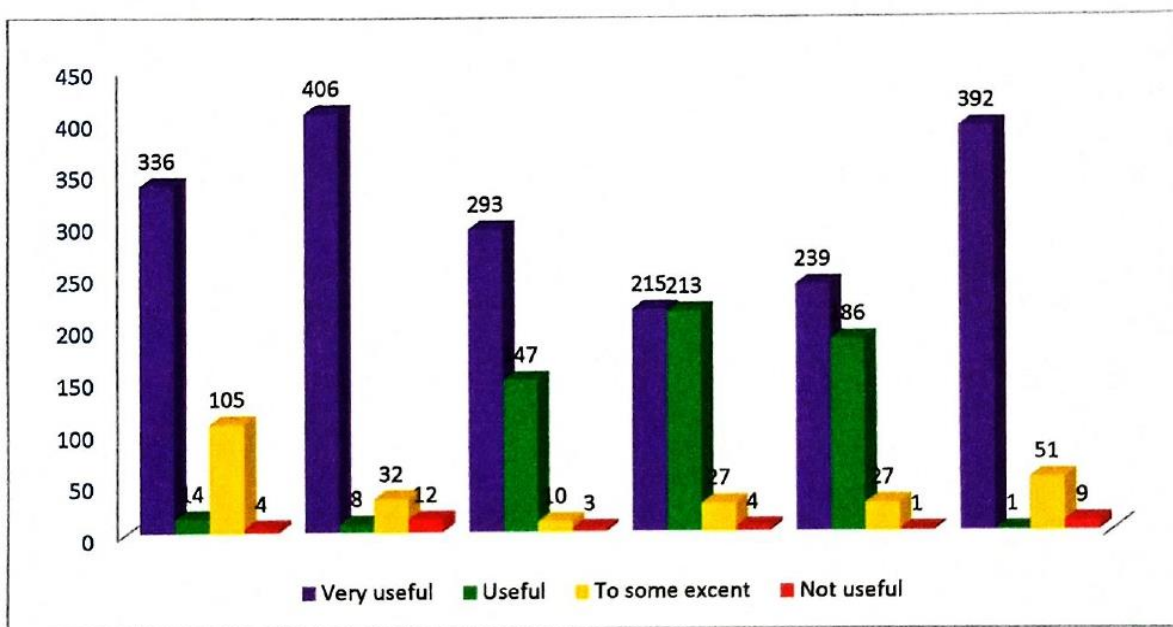
#### Academic Year 2020 -2021

For the academic year 2020 – 2021, the feedback about the Curriculum was collected from the students through online mode. The students’ feedback form consisted of questions that truly indicated their satisfaction level about the analysis. Given below are the conclusions obtained by analyzing the students’ feedback.

| Questions   | Excellent | Good | Average | Poor |
|---|-----------|------|---------|------|
| How effective is the syllabus of the course?  | 234       | 14   | 119     | 3    |
| What is your opinion about Non Major Elective (NME)?  | 414       | 6    | 27      | 16   |
| What is your opinion about Skill Based Elective (SBE)?  | 402       | 9    | 27      | 21   |
| What is your opinion about language papers?   | 351       | 16   | 83      | 8    |
| What is your opinion about Part-V education?  | 383       | 6    | 32      | 30   |
| How do the EVS, Value Education, Gender Studies and Soft Skill courses help your life skills? | 339       | 95   | 8       | 11   |



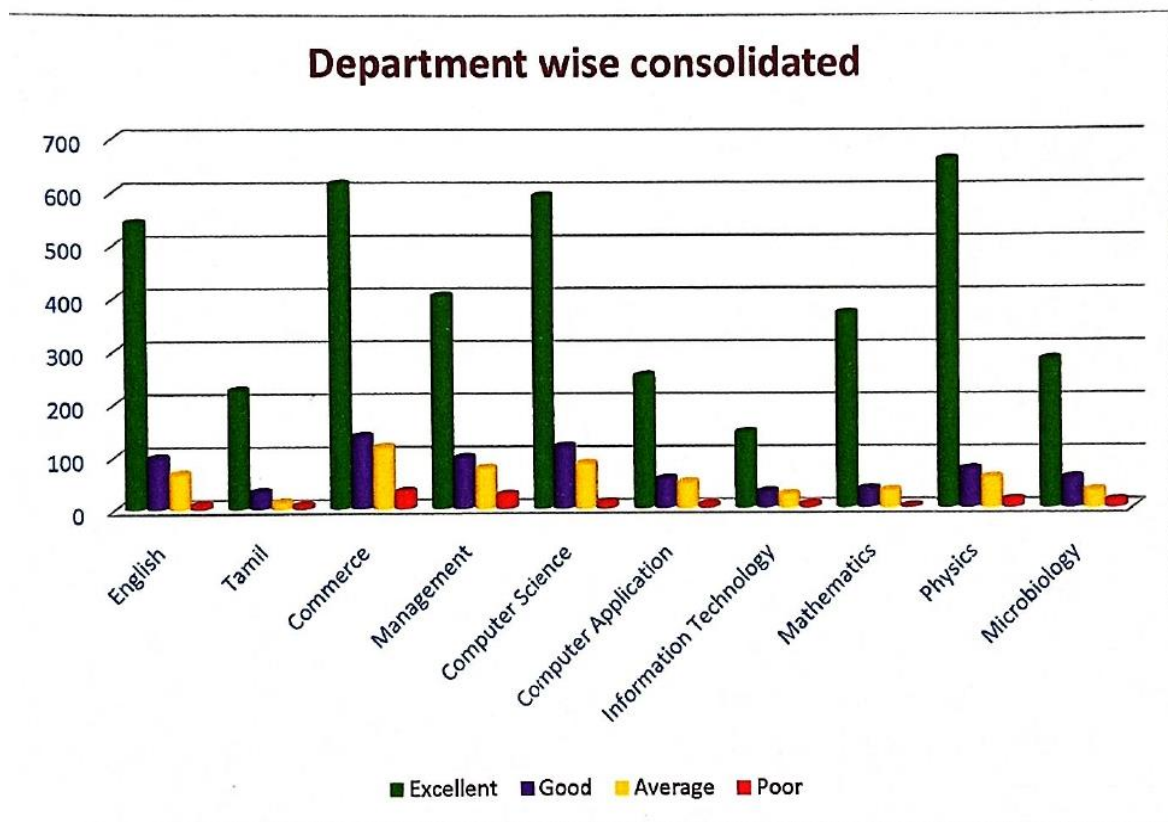
| Questions  | Very useful | Useful | To some extent | Not useful |
|--|-------------|--------|----------------|------------|
| Are the subjects of the course easy to understand?   | 336         | 14     | 105            | 4          |
| Are your skills improved by the syllabus?  | 406         | 8      | 32             | 12         |
| Is the syllabus of your practical's helpful to develop your skills?                              | 293         | 147    | 10             | 3          |
| Are you able to compete in the job market with the help of your syllabus?                        | 215         | 213    | 27             | 4          |
| Are you satisfied with the availability of study materials for all subjects as per the syllabus? | 239         | 186    | 27             | 1          |
| Are the courses you studied useful for higher studies?   | 392         | 1      | 51             | 9          |





### Inference

- 73% of students rated **Excellent** to subjects of the course easy to understand
- 85% of the students gave **good** rating to opinion about Part-V education
- 89% of student rated **Satisfactory** to the skills improved by the syllabus

| Department wise Consolidated |           |      |         |      |
|------------------------------|-----------|------|---------|------|
| Departments                  | Excellent | Good | Average | Poor |
| English                      | 542       | 97   | 66      | 7    |
| Tamil                        | 224       | 32   | 12      | 6    |
| Commerce                     | 615       | 137  | 116     | 32   |
| Management                   | 402       | 96   | 76      | 26   |
| Computer Science             | 592       | 117  | 84      | 11   |
| Computer Application         | 251       | 55   | 48      | 6    |
| Information Technology       | 143       | 30   | 25      | 6    |
| Mathematics                  | 369       | 35   | 32      | 2    |
| Physics                      | 660       | 73   | 57      | 14   |
| Microbiology                 | 281       | 57   | 32      | 13   |



  
**IQAC Coordinator**  
**IQAC Coordinator**  
**Idhaya College For Women**  
**Kumbakonam - 612 001**

  
**Principal**  
**Principal,**  
**Idhaya College for Women,**  
**Kumbakonam - 612 001.**